

# 2017-2025 ROUSH SUPER DUTY SUSPENSION KIT

## INSTALLATION INSTRUCTIONS

P/N: 422308  
(1822-SUSPIN)



**ROUSH**<sup>®</sup>  
P E R F O R M A N C E

28200 Plymouth Rd, Livonia, MI 48150 | [800.59.ROUSH](tel:80059ROUSH)

# 2017-2025 Roush Super Duty Suspension Kit

## Installation Instructions

P/N: 422308  
(1822-SUSPIN)



Application: 2017-2025 Ford Super Duty

### Important Note:

Before installing your ROUSH Performance Product, please read the installation manual and verify that all items are present. If you are missing hardware or have any questions, please contact ROUSH Performance at 1-800-59-ROUSH. Periodic inspection and maintenance is required on the edge seal included with this kit. ROUSH recommends inspecting the seal and maintaining its proper position on a regular basis.

## TABLE OF CONTENTS

PACKING LIST FOR SUPER DUTY SUSPENSION KIT 422308.....3

EQUIPMENT AND SUPPLIES REQUIRED.....4

LIMIT OF LIABILITY STATEMENT.....4

SAFETY PRECAUTIONS.....4

FRONT SHOCK ABSORBER INSTALLATION.....5

JOUNCE BUMPER MODIFICATION AND INSTALLATION.....7

STEERING STABILIZER INSTALLATION.....9

REAR SHOCK ABSORBER INSTALLATION.....11

## PACKING LIST FOR SUPER DUTY SUSPENSION KIT 422308

| Description                             | Part Number | Quantity |
|---|-------------|----------|
| M8X1.25X55 HEX BOLT                     | 11552335    | 2        |
| M8 WASHER - 16MM OD                     | 11552365    | 2        |
| SPACER ASSEMBLY                         | 1820-JNCASM | 2        |
| FRONT SPRING LIFT KIT SET OF 2 - 1.5 IN | 9285        | 1        |
| REAR SHOCK - FOX 2.0                    | 986-24-097  | 2        |
| FRONT SHOCK - FOX 2.0                   | 986-24-098  | 2        |
| FOX - STEERING STABILIZER               | 986-24-099  | 1        |

## EQUIPMENT AND SUPPLIES REQUIRED

- Red Loctite 262 and 271
- Metric and Standard Wrench Sets
- 1/4" 3/8", and 1/2" Drive Torque Wrenches
- Cordless Impact Wrench
- Cordless Ratchet
- 1/4" and 3/8" Drive Ratchets with Extension

If you are missing any items, please call us toll free at 1-800-59-ROUSH.

## LIMIT OF LIABILITY STATEMENT

The information contained in this publication was accurate and in effect at the time the publication was approved for printing and is subject to change without notice or liability. ROUSH Performance Products (RPP) reserves the right to continue the production of parts described at an



## SAFETY PRECAUTIONS

### CAREFULLY READ THE IMPORTANT SAFETY PRECAUTIONS and WARNINGS BEFORE PROCEEDING WITH THE INSTALLATION!

Appropriate disassembly, assembly methods and procedures are essential to ensure the personal safety of the individual performing the kit installation. Improper installation due to the failure to correctly follow these instructions could cause personal injury or death. Read each step of the installation manual carefully before starting the installation.

- Always wear safety glasses for eye protection.
- Place ignition switch in the OFF position.
- Always apply the parking brake when working on a vehicle.
- Block the front and rear tire surface to prevent unexpected vehicle movement.
- If working with a lift, always consult vehicle manual for correct lifting specifications.
- Operate the engine only in well-ventilated areas to avoid exposure to carbon monoxide.
- Do not smoke or use flammable items near or around the fuel system.
- Use chemicals and cleaners in well-ventilated areas.
- Batteries produce explosive gases, which can cause personal injury. Therefore, do not allow flames, sparks or flammable substances to come near the battery.
- Keep hands and any other objects away from the radiator fan blades.
- Keep yourself and your clothing away from moving parts when the engine is running.
- Do not wear loose clothing or jewelry that can get caught in rotating parts or scratch surfaces.
- Allow the engine, cooling system, brakes and exhaust to cool before working on a vehicle.

## WORK SAFELY!

Perform this installation on a good clean level surface for maximum safety and with the engine turned off.



## FRONT SHOCK ABSORBER INSTALLATION

1. Loosen (8) lug nuts on all 4 wheels with 21mm socket wrench, save take-off wheel lugs for reuse.



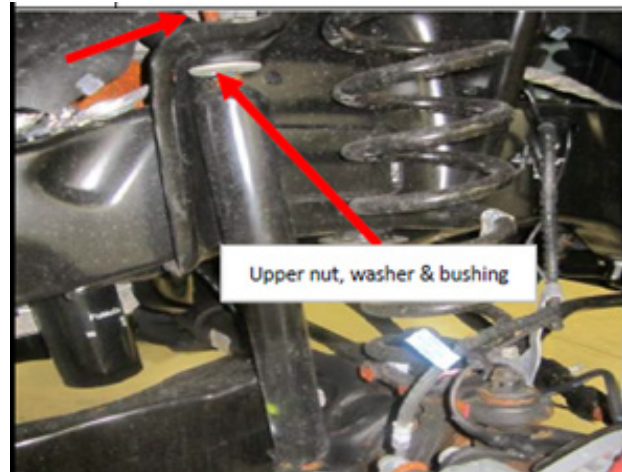
2. Using a shop lift or floor jack to raise the vehicle off ground.



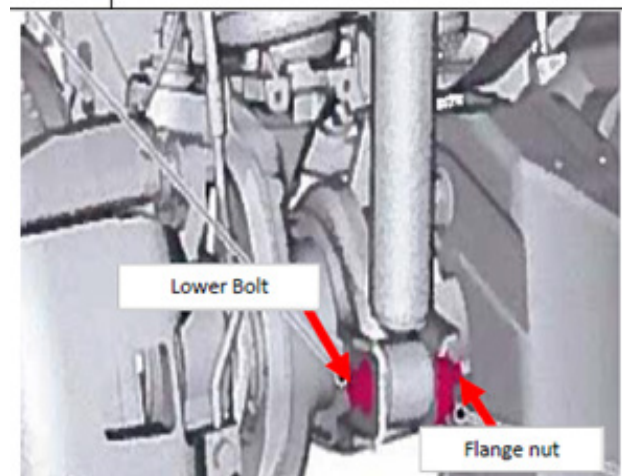
3. Remove vehicle front wheels, save for reuse.



4. Remove upper shock nut, washer, and bushing on both sides of vehicle with 21 mm socket wrench. Discard hardware.



5. Remove lower bolt and flange nut on both sides of vehicle with 18mm socket wrench.



6. Remove shock absorbers and springs from vehicle. Discard hardware.

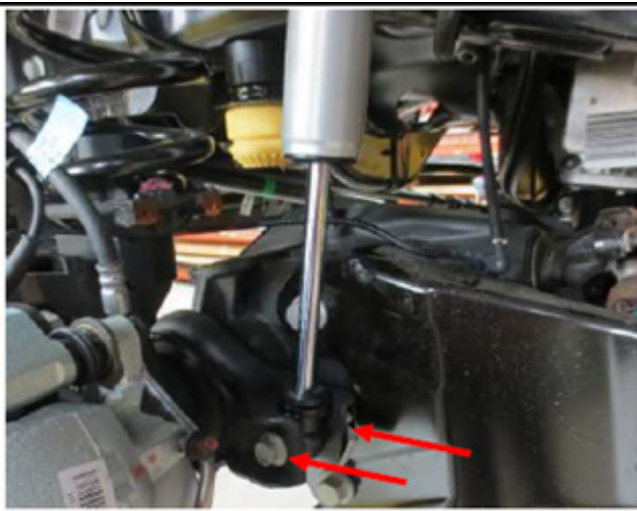


## FRONT SHOCK ABSORBER INSTALLATION

7. Transfer over upper rubber isolator and install new springs (9285). Be sure to align the spring locators on upper and lower mounts.



8. Install new shocks (986-24-098) and fasten lower bolts and flange nuts with 18mm socket wrench. Torque to 150 Nm.



9. Install upper shock nuts with 21mm socket wrench and torque to 61 Nm.



**CONTINUE TO THE NEXT PAGE.**



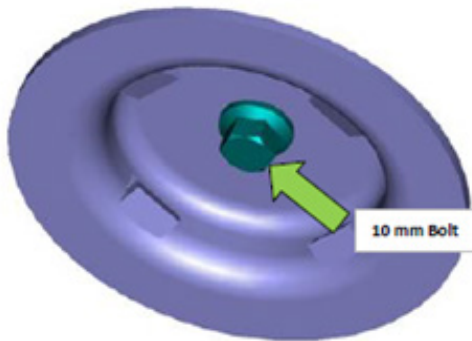
## JOUNCE BUMPER MODIFICATION AND INSTALLATION

10. Locate Hardware Kit R1822-JNCASM.

11. Remove Front Jounce Bumper by pulling out from jounce bumper cup. Apply twisting motion to ease removal.



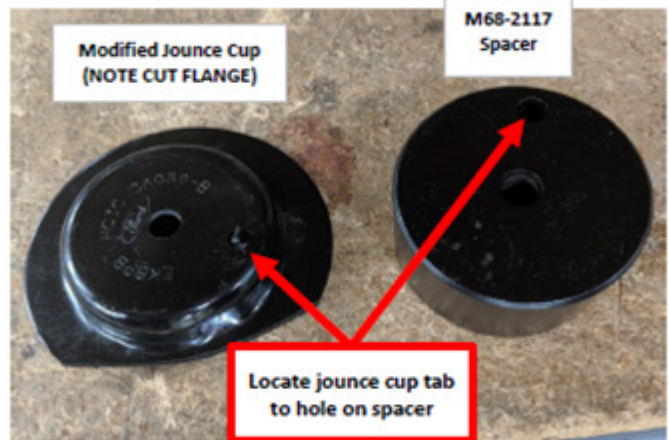
12. Use 10mm socket to remove factory mount from the frame. NOTE: Set aside Jounce Cup for Re-work.



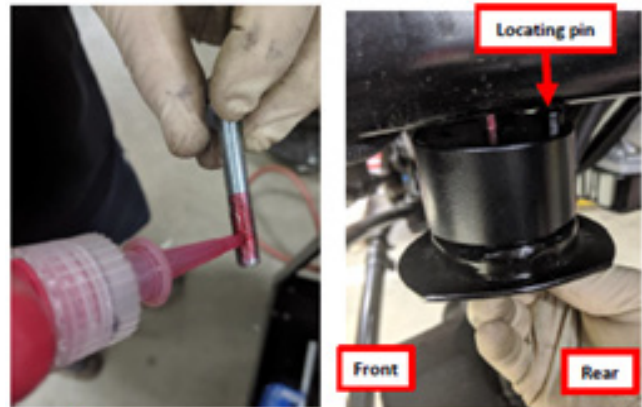
13. Trim Jounce Bumper as shown.



14. Assemble jounce bumper with modified jounce cup and spacer. (NOTE: 1818 will be etched into the part to identify it as the one to use)

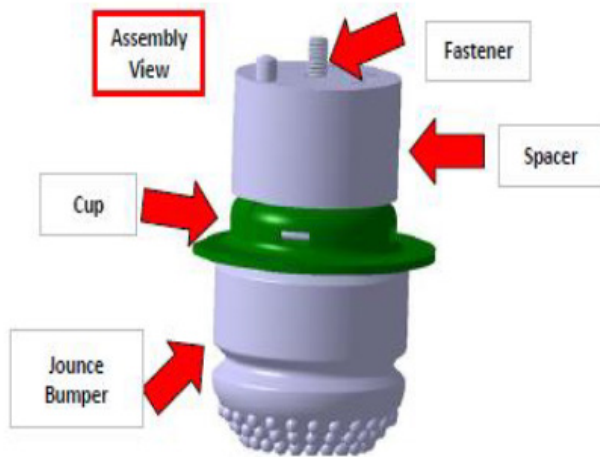
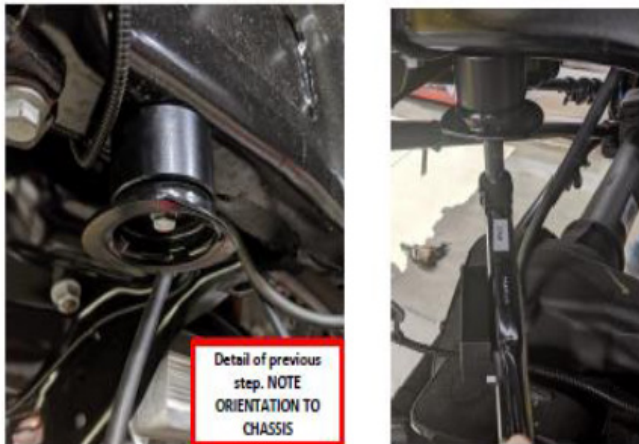


15. Apply Loctite 271 to M8 bolt before install. Install assembly on frame so cut flange faces outside of vehicle (pin on spacer will locate to rear).



## JOUNCE BUMPER MODIFICATION AND INSTALLATION

16. Tighten fastener to secure Front Jounce bumper assembly with Roush-modified cup. Torque fastener to 37 Nm and apply UV Mark. Reinstall rubber jounce bumper by pushing onto cup. Assembly will look as shown below.



**CONTINUE TO THE NEXT PAGE.**



## STEERING STABILIZER INSTALLATION

17. Remove original manufacturers stabilizer. Use 18mm socket to loosen drivers side nut and 15mm socket for passenger side nut (Store 15mm fasteners for later use).



18. Subassemble fastener set provided in the steering stabilizer kit 986-24-099. Long end of the bolt goes through stabilizer. Tighten rear nut using 19mm socket.



19. Apply Loctite 262 on both the bolts and loosely install the steering stabilizer on linkage on the driver side. Adjust the axle and install on the passenger side.



20. Torque bolts to 90 Nm for 19mm bolt and 80 Nm for 15mm bolt.



## STEERING STABILIZER INSTALLATION

21. Cut the cord for stabilizer to expand.



**CONTINUE TO THE NEXT PAGE.**

## REAR SHOCK ABSORBER INSTALLATION

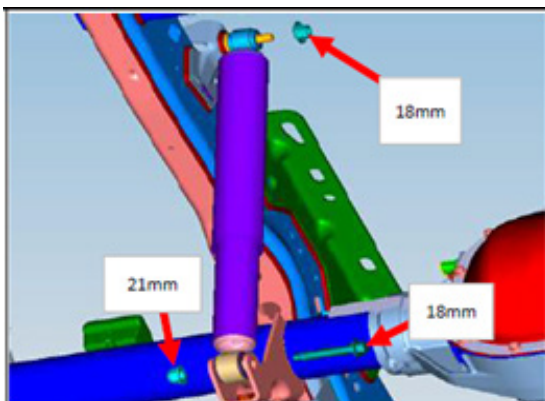
22. If not already done, loosen (8) lug nuts on each rear wheel with 21mm impact socket.



23. If vehicle is on the ground, use a shop lift or floor jack to raise the vehicle off ground and remove rear wheels, save for reuse.



24. Remove the upper nut with 18mm socket wrench. Remove lower nut and bolt with 18mm and 21mm socket wrenches. Remove rear shocks from vehicle



25. Install new shocks (986-24-097) and fasten nut at upper location with 18mm socket wrench. Torque to 70 Nm.



26. Fasten shocks at lower location with nut and bolt and 18mm and 21mm socket wrenches. Torque to 150 Nm.



27. Re-Install vehicle wheels and fasten with (8) lug nuts. Torque to 224 Nm.



Congratulation! You have completed the installation process.